

DSL Cluster Meeting

Summer 2018



- Updates
- Section 175 audit
- KCSiE 2018
- Emotionally Healthy Schools Model Policy
- Exercise: Safety Circles , Signs of Safety
- Useful resources and links
- Voice of the Child Toolkit

S.175/157 Audit

One of Cheshire East's Safeguarding Children Board's statutory functions is to ensure that bodies are fulfilling their statutory obligations regarding safeguarding. This is found under Section 14B of the Children Act 2004.

The LSCB will audit these responses on **Friday 22nd June 2018** so please ensure that your responses are all complete by that date.

PLEASE CONTACT THE LSCB ADVICE – 01606 271603
don't leave it until the last minute, the LSCB can support.

<https://partnerships.cheshireeast.gov.uk/section175/>

KCSiE 2018 Changes

- The Department for Education has revised the guidance Keeping children safe in education: statutory guidance for schools and colleges, following a 10 week consultation earlier this year. The guidance is currently for information only but will come into force for schools from September 2018.
- The guidance has been strengthened and further clarified throughout. The key addition to the guidance is the new part (part 5) on advice for schools on responding to and supporting young victims of sexual violence and harassment.
- Relevant parts of the guidance will be updated again when the statutory guidance Working together to safeguard children is published.

EGRESS

- Reminder:
- If sending emails containing personal or sensitive information this should be sent securely using Egress.



Emotionally Healthy Schools



‘The number of Cheshire East schools achieving AcSEED accreditation (and there are more in the review pipeline) suggests that the EHS programme is having a very positive impact on the provision of comprehensive mental health and wellbeing support in local schools. And it also helps our accreditation process as we see similar themes and provisions being used - a key objective of AcSEED was to improve the consistency of wellbeing support across schools’

5/8 schools recently achieving the AcSEED award were Cheshire East Schools:

- **Pikemere Primary School** in Alsager, Cheshire
- **Edleston Primary School** in Crewe, Cheshire
- **Shavington Academy** in Crewe, Cheshire
- **Middlewich High School** in Middlewich, Cheshire
- **Leighton Academy** in Crewe, Cheshire

Emotionally Healthy Schools – Model Policy

- The Policy has now been endorsed by Cheshire East LSCB
- We will send this out with the DSL PowerPoint presentation



Raising awareness



fighting depression



Cheshire East Local
Safeguarding Children Bo



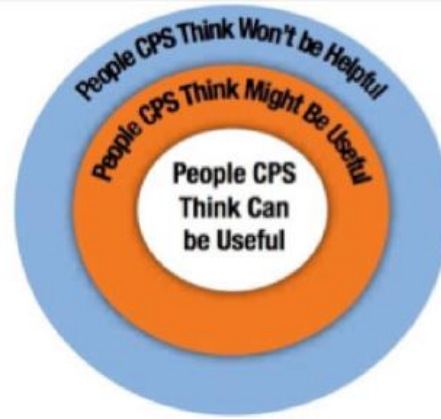
Safety Circles

Tools



Circles of Support







To book your place: please complete this booking form https://form.cheshireeast.gov.uk/service/LSCB_Training_Booking_2018_19
Any queries please contact LSCBTrainingAdministrator@cheshireeast.gov.uk

Signs of Safety Training Dates

The three different options for Signs of Safety training, dates and how to book are included below.

2 Day Training

Who is it aimed at? Practitioners who work directly with families, and their line managers

What does it cover? What Signs of Safety is, how to use it in practice, and tools for working together with children, young people and families. The two day covers similar content to the half day but goes into more detail on using the practice and includes practising applying the approach to live cases.

Dates:

- **27th and 28th June**, 9.30-4.30, Crewe
- **16th and 17th July**, 9.30-4.30, Crewe
- **24th and 25th July**, 9.30-4.30, Wilmslow
- **13th and 14th August**, 9.30-4.30, Crewe
- **12th and 13th September**, 9.30-4.30, Crewe
- **19th and 20th September**, 9.30-4.30, Macclesfield
- **27th and 28th September**, 9.30-4.30, Macclesfield
- **4th and 5th October**, 9.30-4.30, Macclesfield
- **16th and 17th October**, 9.30-4.30, Wilmslow
- **12th and 13th November**, 9.30-4.30, Macclesfield
- **19th and 20th November**, 9.30-4.30, Wilmslow
- **28th and 29th November**, 9.30-4.30, Macclesfield
- **4th and 5th December**, 9.30-4.30, Wilmslow
- **12th and 13th December**, 9.30-4.30, Macclesfield

Half Day Training

Who is it aimed at? Anyone who works with families and needs to know about Signs of Safety and what it involves.

What does it cover? What Signs of Safety is, how to use it in practice, and tools for working together with children, young people and families. The half day course is a concise version of the 2 day course.

Dates:

- **21st September**, 9.30-1.00, Westfields Sandbach
- **25th September**, 9.30-1.00, Macclesfield Old Town Hall

To book your place: Please email SignsofSafety@cheshireeast.gov.uk with the date you would like to book onto.

Any queries please contact the email address above or contact Rebekka Wilson at 01270 685962.

E-learning

Who is it aimed at? Anyone who needs to know about Signs of Safety and what it involves.

What does it cover? An introduction to Signs of Safety; what it is, what the approach involves, and the key tools.

To access the e-learning please click the links below:

For partners including schools:

<http://cheshireeast.learningpool.com/totara/dashboard/index.php?id=5>

For Cheshire East Council staff:

<http://cheshireeast.learningpool.com/course/view.php?id=388>



Relationships and sex education

- The NSPCC and the PHSE Association have published lesson plans and guidance to help schools teach relationships and sex education (RSE). The resource includes lesson plans for teachers spanning Key Stages 2, 3 and 4 (age 10-16) covering subjects including: transition to secondary school; online safety and online friendships; consent; sexualised behaviour; unhealthy relationships; and sharing sexual images. A guide for teachers to support the delivery of the Making sense of relationships lesson plans has also been published.
- **Source:** [NSPCC: Making sense of relationships: PSHE lesson plans for key stages 2-4 on personal safety and healthy relationships](#) **Date:** 25 May 2018

Appropriate Filtering and Monitoring Definitions

- The UK Safer Internet Centre has reviewed its 'appropriate' filtering and monitoring definitions which aim to help both schools and providers understand what is considered 'appropriate'. The UK Safer Internet Centre is publishing these as draft for consultation until June 15th 2018.
- **Source:** [UK Safer Internet Centre](#) **Date:** 18 May 2018
- **Further information:** [Appropriate filtering for education settings: draft for consultation \(PDF\)](#)
- [Appropriate monitoring for schools: draft for consultation \(PDF\)](#)

Advice on Streaming for Parents and Carers



[Home](#) | [Blog](#) | [Staying safe online whilst livestreaming - advice for parents and carers](#)

Staying safe online whilst livestreaming - advice for parents and carers

15 May 2018

UK Safer Internet Centre Director Will Gardner looks at the IWF's latest livestreaming research and gives advice to parents and carers.

The release of the Internet Watch Foundation's new online live-streaming research, titled [Trends in Online Child Sexual Exploitation: Examining the Distribution of Captures of Live-streamed Child Sexual Abuse](#) may have concerned some parents.

In this research the author worked with over 2000 cases where (she believed) children had been either groomed or coerced into live-streaming videos of themselves, via their webcam, mobile or tablet. Most of the illegal videos she saw had been recorded by offenders, who viewed the live-streamed abuse and then redistributed it. In many cases, the children appeared to be completely unaware a recording was being made.

This research highlights the need for us all to be aware that although the internet can be a great place for young people, there are some potential dangers posed by technology. This blog includes some advice and top tips to help children to be safe online whilst live-streaming.

<https://www.saferinternet.org.uk/blog/staying-safe-online-whilst-livestreaming-advice-parents-and-carers>

Advice on Setting Parental Controls



Setting Wii U Parental Controls

Applies to: Wii U

Parental Controls can be set at any time on Wii U. It's possible to configure these options while setting up a Wii U user account for the first time, and then after this point they can be altered via the Parental Control software.

Using Parental Controls on Wii U

Follow these steps to set up Parental Controls:

1. Open the Parental Controls software from the Wii U Menu and follow the on-screen instructions.
2. Choose a PIN code to ensure that your child cannot change your chosen settings. You will be asked to enter the PIN twice to confirm.
3. Select a secret question and answer in case you forget your PIN. This can be used to retrieve access to Parental Controls if you forget your PIN.
4. You can choose to register an email address; please choose an email address your child does not have access to. If you forget your PIN and the answer to your secret question, you can request for a master key to be sent to your registered email address, which will allow you to reset your PIN code. You will be asked to enter the email address twice.
5. Choose a user account. It is possible to apply individual Parental Controls to each user account.
6. By default, all Parental Control options are enabled when you set up Parental Controls on a user account. You can individually configure the settings to your needs by selecting the separate topics. Please note that you will need the PIN code to access certain important functions, including Internet Settings and Format System Memory. It's also possible to configure settings for Wii software by clicking the Wii Menu Settings button. Please note that you cannot apply separate settings to individual users for Wii software.
7. Once you are satisfied with your settings, tap the "Done" button to confirm. You will be taken back to the Parental Controls front screen.



Set parental controls for Xbox 360

Overview

The Xbox 360 console lets you customize and manage your family's access to games, movies, and television content. The Xbox 360 parental controls can be used to control both the console itself and access to content on Xbox Live, including:

- Which games can be played.
- Which movies and TV shows can be watched.
- How long each family member can use the console on a daily or weekly basis.
- Whether or not a family member can access Xbox Live.

How do I turn on parental controls on my Xbox 360 console?

Parental controls for Xbox 360 can be set through the console itself or on Xbox Live through your computer.

Watch the following video to learn about parental controls.

[How do I turn on parental controls.](#)

Parental controls are divided into two groups: console controls and [online safety and privacy settings](#).

Console controls are located in the Family Settings or Family Center area on your console (depending on your Xbox Live membership type).

Set parental controls on your Xbox 360 console

1. On your console, go to **Settings**, and then select **Family**.
2. Select the gamertag of the child whose settings you want to adjust.
3. Under **Privacy & Online Settings**, select **Change Settings**.
4. Update the settings and then exit the screen to save.

Set parental controls through your computer

1. Sign in to your [Xbox account](#).
2. Tap or click **My account**.
3. Tap or click **Security, family & forums**.
4. Tap or click **Xbox 360 Online Safety**, and then select the account you want to adjust. (Your child's avatar will be shown here next to your own.)
5. Select **Allowed** or **Blocked** next to the areas you want to limit or allow access to, and then tap or click **Save**.

Guides for PlayStation, Xbox, Wii and Nintendo will be emailed out with the slides. Could you put them onto your website?

Pants

- Visit the NSPCC website for [further information about the NSPCC Underwear Rule campaign.](#)
- The NSPCC and [Mencap](#) have worked together to produce [an easy-read version](#) for parents and children who have a learning disability.

In this section ▾

You are here: [Home](#) > [About autism](#) > [Communication](#) > [Sex education and puberty](#) > The Underwear Rule

The Underwear Rule

Share page:   Tweet



E-Safety Resources

Read Digiduck® online



Digiduck's Big Decision -
pdf storybook
PDF Format (5.99 MB)

Download the Digiduck® app



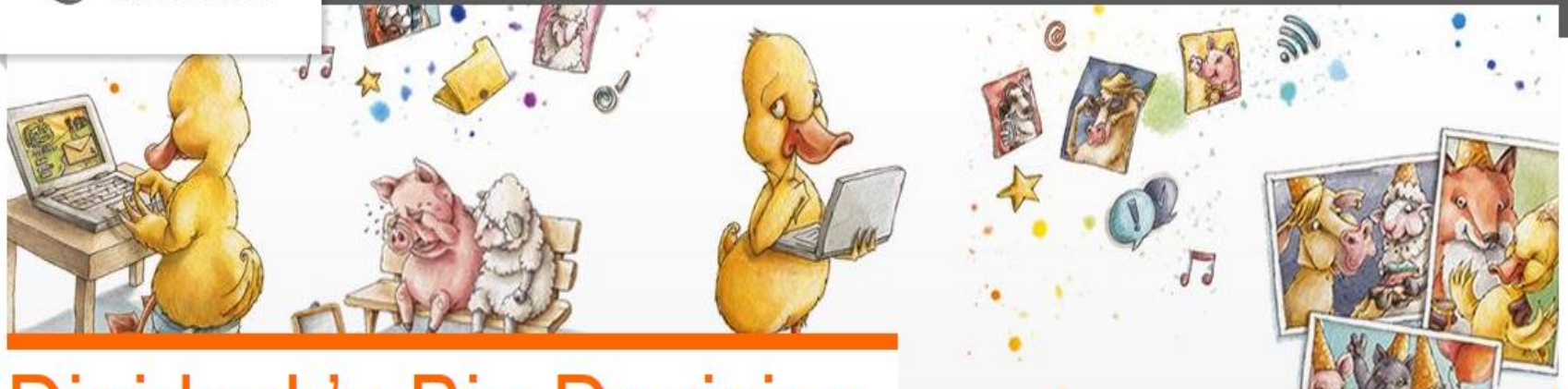
Digiduck's Big Decision -
Apple App Store
Website



Digiduck's Big Decision -
Google Play
Website

The app for tablets has been produced in partnership with Internet Matters, an organisation that offers resources and expert advice to help parents keep children safe online. [Visit the site](#) to learn more.

**internet
matters.org**



Digiduck's Big Decision

[← Back to resources](#)

A brilliant online safety resource for young children

Help arrives just in time for Digiduck® when faced with a difficult decision! Follow Digiduck® and his pals in this story of friendship and responsibility online.

The Digiduck® collection has been created to help parents and teachers educate children aged 3 - 7 about how to be a good friend online. The collection now includes a book, PDF and interactive app.

You can also order me in
the shop



KS2 Internet Safety resources

Key stage 2
Free resources
for teaching
internet safety

Google

PSHE Association
Quality Assured
Resource
PSHE

Google | ParentZone

Sharp
Alert
Secure
Kind
Brave

Be
Internet
Legends.

Google's Be Internet Legends curriculum is a free internet safety educational resource for pupils aged 7-11 years-old.

Created by Google and our team here at Parent Zone, it includes PSHE accredited lesson plans and activities delivering important internet safety messages. With an interactive game to reinforce learning, the Be Internet Legends programme provides a complete internet safety resource for your school. Find out more about **Parent Zone's** role in the project.

The curriculum pack is free to order. Please note that the packs are limited to one copy per KS2 teacher. Check our **FAQ section** here.

<https://parentzone.org.uk/be-internet-legends>

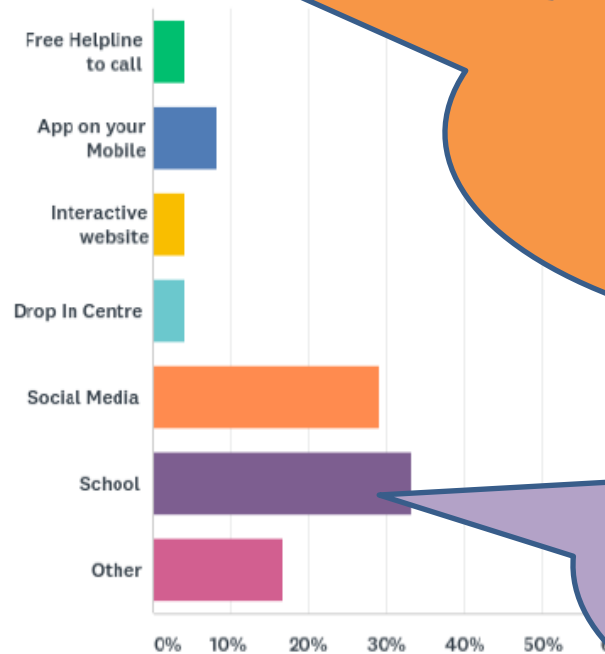
CSE / MFH Services

The four Cheshire LA's have recently undertaken a tender exercise for the Missing from Home/Care and Child Exploitation Service. The service has been awarded to a new provider **Addaction** and this will commence on 1st July 2108. The service will have two distinct requirements:

1. To provide a dedicated and specialist service to young people who are either at risk of sexual (CSE) or criminal exploitation(CE) or who have experienced sexual or criminal exploitation.
2. To provide independent return interviews for all children and young people who have returned from a period of being missing. This also includes working with agencies to develop a plan and taking appropriate action designed to mitigate the risks for each individual young person.

Catch 22: Missing From Home Prevention Report, May 2018

Where do you think would have been the best place to get any help or support before you went missing?



59% of the Children who went missing said they would have liked some support or help prior to their missing incident.

33% of children who went missing and would have liked help said they would prefer to have received information from school

**catch
22**

Possible CSE perpetrator

- A 19year old believed to be a youth team footballer (possibly for Brentford) has been contacting a 15year old in CE with a view to meeting them and picking them up in his Mercedes.
- If schools hear anything please contact the police. Titan has been informed (North West Regional Organised Crime Unit).

RASASC

- <https://www.rapecentre.org.uk/>

Please note: The ISVA works during office hours. If contacting outside this time, please leave a text or voicemail message and the ISVA will get back to you when back in the office.

For further information please write to us at:

RASASC
PO Box 35
Warrington
WA1 1DW

Or you can telephone us:
03303630063

Or you can e-mail us at:
support@rapecentre.org

Website
www.rapecentre.org.uk

RASASC 2006
Registered Charity No.1049826 in England & Wales




Information: 100A, Groups, Support, Partnership, Recovery, Counselling, Empowerment

Children & Young Person's Independent Sexual Violence Advisor (ISVA)




Who Am I?

- I am an advisor who works separately from the police and the courts. I can offer you support through the whole process of reporting sexual violence to the police, from your initial report and all the way through the criminal justice process.



- This support may involve me answering any questions you or your parent/carer may have, letting others (such as the police) know what your needs are and helping you to access other services you may need for extra support.




- I will not judge you and can provide a safe and friendly place for you to talk about your feelings and any worries you may have about this process. I am here to make sure your voice is heard and your wishes are listened to throughout the criminal justice process and to make sure that you feel prepared should your case go to court.

How will I support you?

- You may visit me in one of my offices or at your local children's centre. I can provide face to face or telephone support sessions at crucial times throughout the process.

- You will be given a telephone number to contact me on and we can discuss how you would like me to get in touch with you—whether that be through a parent or yourself and also whether you prefer text or phone calls.



- I will work with you to identify what kind of support and advice (if any) you feel that you need.

- I can help you to understand how the criminal justice process works and explain some of the legal information.

- I can gain information on your behalf about your case by talking with the Police and the Crown Prosecution Service.

- I can also introduce you to other agencies and specialist services that you may need for further support.



Adobe Acrobat Document

Bereavement Support

Books for younger children:

- Frog and the Birdsong by Max Velthuijs (Picture Book)
- Benny's Hat by Juliet Clare Bell and Dave Gray (Picture Book)
- Badger's Parting Gifts by Susan Varley (Picture Book)
- Top 10 children's books on death and bereavement (Guardian)

<https://www.theguardian.com/childrens-books-site/2015/feb/05/top-10-childrens-books-on-death-bereavement-holly-webb>

Books for teenagers about death and grief (Marie Curie)

<https://www.mariecurie.org.uk/help/support/bereaved-family-friends/coping-grief-teenager/teen-grief-books>

St Albans and District Bereavement Network have listed many available resources in this pdf, which includes links for bereavement after suicide, murder, road accidents and the loss of a baby:

<http://www.sabn.org.uk/pdfs/info-and-resources/Resources-for-School-Staff-About-Bereavement-VERSION3-for-website-updated-03072013.pdf>

Explaining Bereavement to children with autism (National Autistic Society)

<http://www.autism.org.uk/about/family-life/bereavement.aspx>

Websites and Charities

Child Bereavement UK: <https://childbereavementuk.org>

Child Bereavement Network:
<http://www.childhoodbereavementnetwork.org.uk/>

Marie Curie:
<https://www.mariecurie.org.uk/>

Winston's Wish:
<https://www.winstonswish.org/>

Elsie's journey

The Childhood Bereavement Network (CBN) estimate that around one in 29 school-age children have been bereaved of a parent or sibling – that's roughly one per class.

[Learning about loss](#), is an article on the website of the National Children's Bureau helping schools to think about how they can tackle dying and bereavement within their curriculum. The resources below will help you deal with these issues.

Learning about Loss (National Children's Bureau)

<https://www.ncb.org.uk/news-opinion/news-highlights/learning-about-loss>

Managing a sudden death in the school community (LGfL)

<http://bereavement.lgfl.org.uk>

Responding to a death that is suspected to be a suicide (Samaritans)

<https://www.samaritans.org/education/step-by-step/resources/respond-suspected-suicide-schools>

Talking about death with your little one (CBeebies)

<https://www.bbc.co.uk/cbeebies/grownups/our-family-talking-about-death-with-your-little-one>

How to support a bereaved child (Video, Child Bereavement UK)

<https://www.youtube.com/watch?v=Aix0ted9NKK>

What helps grieving children and young people (pdf)

<https://childbereavementuk.org/wp-content/uploads/2016/05/1.4-What-helps-grieving-children-and-young-people-1.pdf>

Road Safety Resources

- <https://www.think.gov.uk/education/>



Prevent Key Facts and Figures



- In 2016/17 6,093 were referred to Prevent and of those:-
 - 45 per cent were signposted to alternative support,
 - 36 per cent required no further action and
 - 19 per cent were discussed at Channel panels.
- Of those that received Channel support in 2016/17, 79 per cent left with their vulnerability successfully reduced.
- In 2016/17, 38 per cent of those receiving support on Channel was as a result of referrals from the education sector.
- Of individuals supported by Channel in 2016/17 68 per cent were aged 20 years or under and 87 per cent were male.
- Between 2012/13 and 2016/17 the number of people supported by Channel has more than doubled from 159 individuals to 332.
- Participation in Channel is voluntary and confidential and is not a criminal sanction.
- the proportion of individuals supported by Channel as a result of far-right concerns has risen from a quarter in 2015/16 to over a third in 2016/17

- **What kind of support is offered via Channel?**

The type of support available is wide-ranging, and can include help with education or career advice, dealing with mental or emotional health issues, drug/alcohol abuse, and theological or ideological mentoring from a Channel Intervention Provider (A specialist mentor).

Safeguarding Quiz

- Westminster nursery

Safeguarding Children and Young People Affected by Domestic and Relationship Abuse




A Children's version of the policy is available:
<https://www.cheshireeast.gov.uk/livewell/staying-safe/domestic-abuse-and-sexual-violence/children-and-domestic-abuse.aspx>

Voice of the Child Toolkit




Example

Anonymous Age 10



House of Good Things
Dom dobrych rzeczy




House of Worries
Dom zmartwień

I don't know really
I'm not really sad though

House of Dreams:
Dom marzeń

Good in Poland
I am moving to Poland in 16 days
I know a lot of people



Every day's the same
I feel safe
I like it
I have good friends
I can talk to my friends or Mrs. or Nurse Sharp

Primary



Secondary



SEND Voice Matters

An event designed specifically for SEND Children and Young People to have their voice heard. Bring along your students to meet the Participation Team and get involved with some fun activities. It will be an opportunity to develop and improve wider SEND support within Cheshire East.

SEND Voice Matters

An event designed specifically for SEND Children and Young People to have their voice heard. Bring along your students to meet the Participation Team and get involved with some fun activities. It will be an opportunity to develop and improve wider SEND support within Cheshire East.

Arts and Crafts

Meet new people

Opportunities for Children & Young People to have their say

Interactive games and activities

Date: Tuesday 10th July 2018 Time: 10:00 - 12:00

Venue: Malbank School & Sixth Form College,
Welsh Row, Nantwich, Cheshire,
CW5 5HD

There are limited spaces available so please book on as soon as possible.

If you would like to book spaces please send a request to:

fiona.ellis@cheshireeast.gov.uk

Contact Fiona Ellis on 07794 437078 or 01625384343

Arts and Crafts

Meet new people

Opportunities for Children & Young People to have their say

Interactive games and activities

Date: Tuesday 10th July 2018 Time: 13:00 - 15:00

Venue: Malbank School & Sixth Form College,
Welsh Row, Nantwich, Cheshire,
CW5 5HD

There are limited spaces available so please book on as soon as possible.

If you would like to book spaces please send a request to:

fiona.ellis@cheshireeast.gov.uk

Contact Fiona Ellis on 07794 437078 or 01625384343

SCiES Training Brochure

- The training brochure will be circulated in July and will include a range of training on different aspects of Signs of Safety.

Planning exercise

- SCiES

What has worked well?	What has been missing?	What do we need to do next?

And the usual reminders!

- LADO referrals
- Transfer of records

And finally have a...

